



SEER® for Software (SEER-SEM™) is a comprehensive solution for the planning, costing and scheduling of software development and maintenance efforts, applicable to all software types from complex embedded systems to business/IT applications. Based on sophisticated modeling technology, SEER solutions help organizations assess up-front project feasibility, optimize project costs and schedules, assess risks and probabilities, monitor project progress, and develop detailed project plans.

Key Features — The SEER-SEM solution employs a multi-faceted approach to estimating and costing leveraging:

Parametrics built into SEER-SEM are to compute effort, schedule and staffing based on size and other productivity factors.

Rate & Quantity models can be easily set up for easy calculation of effort and cost when basic variables are known.

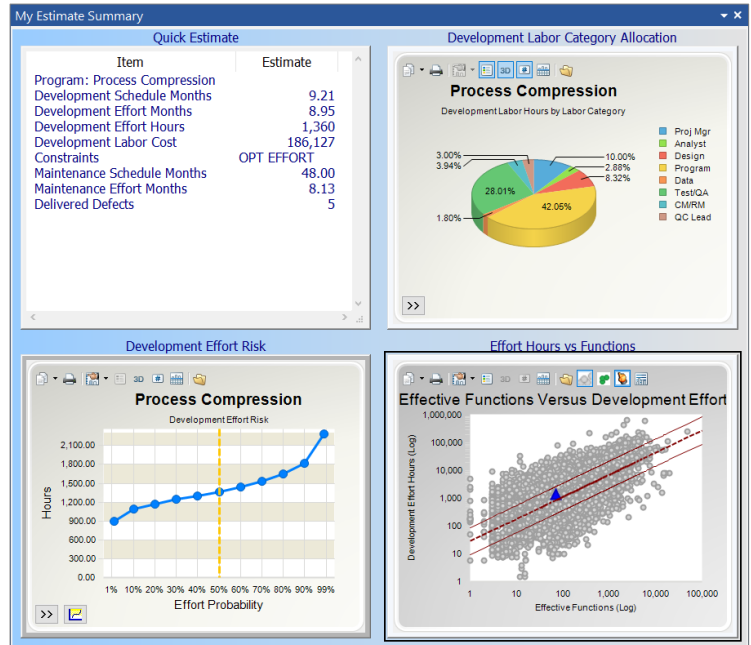
Multiple Sizing Methods to drive parametric estimation including ISO standard functional size metrics, source lines of code, tee-shirt sizing, story points, RICEF objects and many more.

Size Metric Generator can be used to create organization specific size metrics or tune story points to known team velocities.

Analogy Based Sizing enables you to query past projects for size references.

Knowledge Bases define the domain, type of software, type of project and development approaches used and set parameters to target industry productivity metrics.

Agile Planner boosts the basic estimating process by considering team and sprint strategies being used on a project. The Agile Planner will help you determine an optimal team size, predict team velocity when not known, and determine the number of sprints required for a given strategy.





Project Monitoring and Control quickly assesses project progress and evaluates corrective actions to keep projects on track.

Project Assistant offers a step-by-step guided process for creating estimates, perfect for new or occasional users.

Integrated Risk Analysis using Monte Carlo analysis provides cost and schedule results at different confidence levels, offering realistic best to worst case outcomes.

Visual Benchmarking compares estimates with industry data or your organization's data.

Applicability — SEER-SEM can be used for any type of software/application development or maintenance effort. Knowledge base designations define the domain, type of software, type of project and development approaches. A configurable programming language list features over 100 languages such as Java, C++, Python, and many more. SEER-SEM comes with an extensive set of knowledge bases applicable to many industries, technologies and development approaches.

Unparalleled Cost Visibility — Numerous charts and reports are available for quickly summarizing and communicating cost outcomes, alternatives, and work-in-progress. Results can be documented using SEER's rich reporting capabilities, saved as a PDF, or can be exported to third-party applications such as Microsoft Project. Examples include:

- **Quick Estimate:** Provides a quick summary of the overall estimate. Set a baseline estimate to perform extensive what-if analyses.
- **Agile Estimate:** In addition to hours, cost and team size, the agile estimate provides the number of sprints, average and peak team velocity.
- **Lifecycle Activity:** Shows schedule months, labor hours, labor cost and material cost for all phases including software maintenance.
- **Labor Category:** Offers cost and hours by labor role for all roles specified. Labor detail shows hours and costs for each of the labor categories included in your estimate.
- **Monthly & Yearly:** Staffing, cost and labor hours over time, either by month or by fiscal year. Annualized costs offered in both base year and then year.
- **WBS:** Several views of cost, schedule and hours by year or activity for the entire WBS.
- **Monte Carlo Risk:** Statistically generated cost and hours as a function of the probability of completion within budget, broken out into labor hours, labor cost, material cost and total cost.
- **Other:** Time phased defects, software metrics and many other reports available, including the ability to create custom reports.