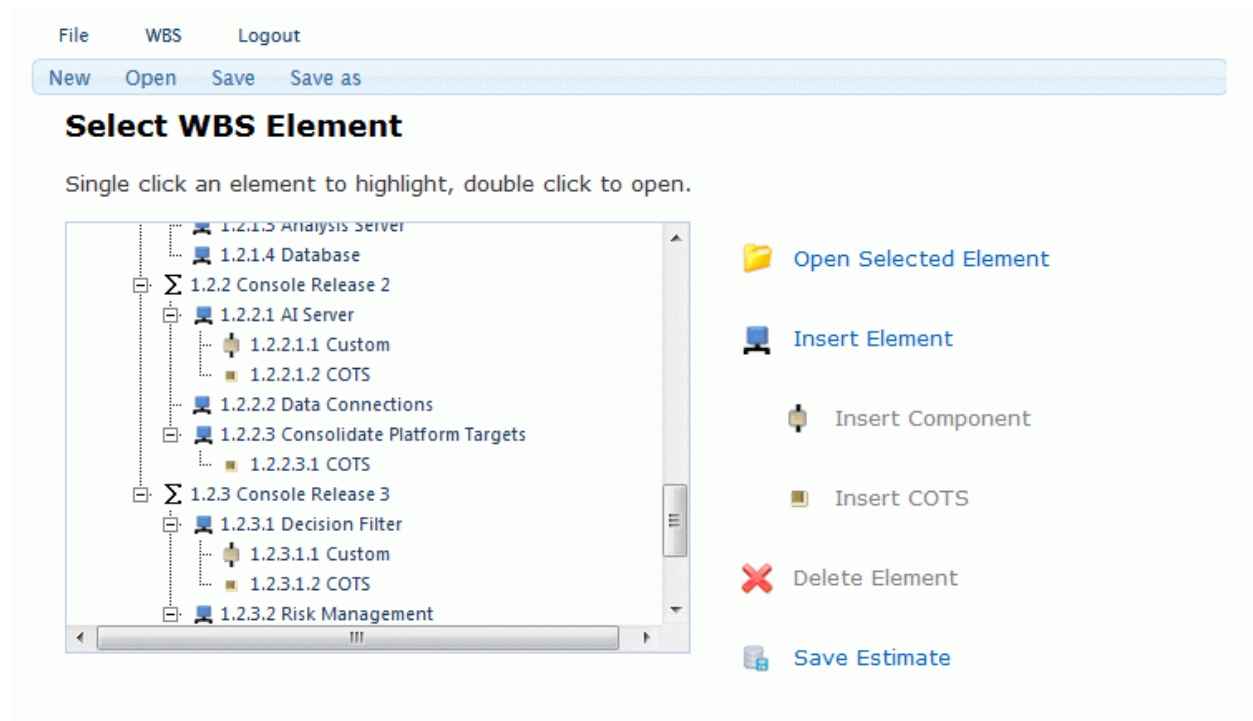


SEER-SEM Browser Edition

Purpose

The Browser Edition of SEER-SEM is a streamlined, highly customizable version of SEER for Software.



SEER-SEM Browser Edition

The Browser Edition brings SEER-SEM's parametric cost-estimation capabilities to a broad range of users via internet or intranet. Its advantages include:

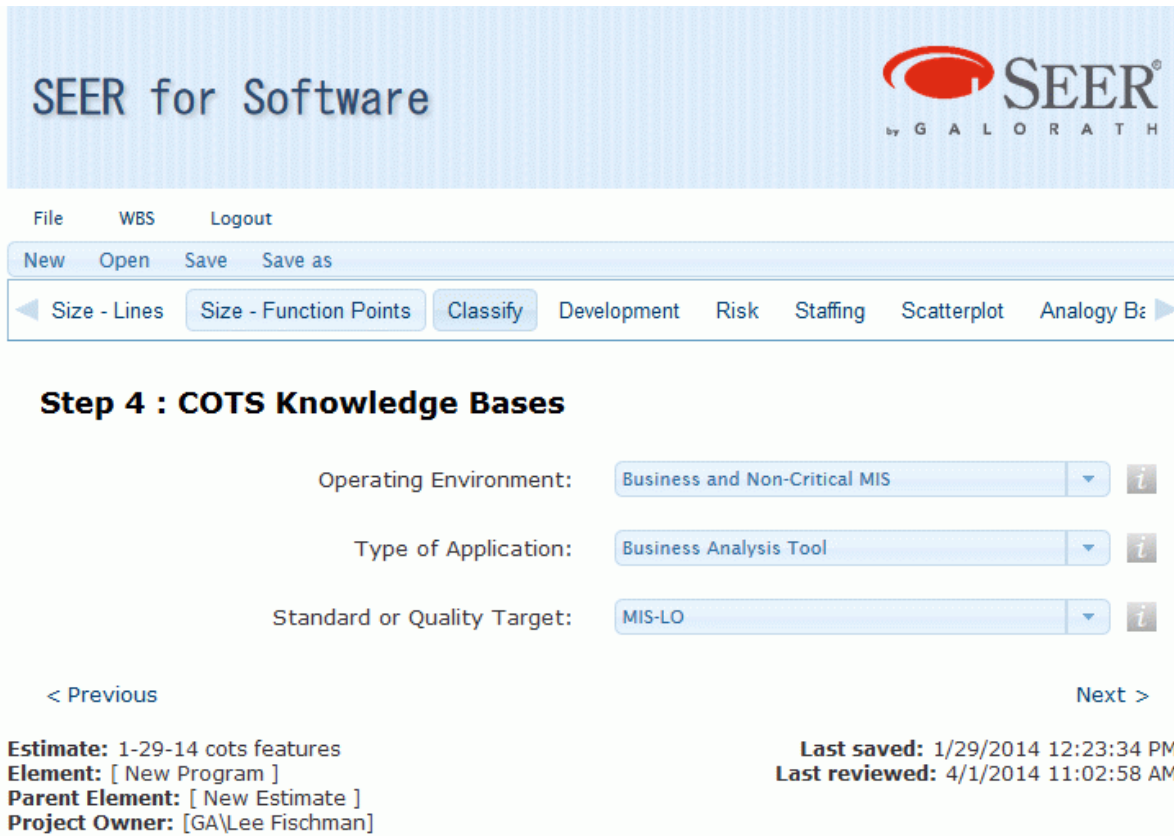
- Zero footprint – no desktop installation is required
- Platform independence – users may access SEER-SEM from non-Windows environments, including Linux, the Macintosh OS and from tablets
- Centralized, secure data storage – controlled access to estimate data, synchronized updates, centralized maintenance and backup of data
- Extended access to estimating projects – supports role-driven (Read/Write or Read-Only) permissions and views of project information
- Your server or in the cloud – easier collaboration with geographically dispersed teams
- Highly customizable interface – enables wider deployment to a variety of users, for example, full time estimators, line managers, and executive reviewers

Architecture

The SEER-SEM Browser Edition consists of the following components:

- A single installation of SEER-SEM on the server
- An installation of the SEER Enterprise Database (SEER-DB) on a server that is accessible by the SEER-SEM installation
- The SEER-SEM Browser Edition server component, installed on the server

Users connect to the SEER-SEM Browser Edition via the browser, logging in with a user name and password. A streamlined version of the SEER-SEM interface is displayed in the browser window.



The screenshot displays the SEER for Software web interface. At the top, the title 'SEER for Software' and the SEER logo are visible. Below the header is a navigation menu with options: File, WBS, Logout, New, Open, Save, Save as, and a set of tool buttons including Size - Lines, Size - Function Points (selected), Classify, Development, Risk, Staffing, Scatterplot, and Analogy B. The main content area is titled 'Step 4 : COTS Knowledge Bases' and contains three dropdown menus for configuration: 'Operating Environment' set to 'Business and Non-Critical MIS', 'Type of Application' set to 'Business Analysis Tool', and 'Standard or Quality Target' set to 'MIS-LO'. Each dropdown has an information icon (i). Navigation links '< Previous' and 'Next >' are present. At the bottom, metadata is shown: 'Estimate: 1-29-14 cots features', 'Element: [New Program]', 'Parent Element: [New Estimate]', and 'Project Owner: [GA\Lee Fischman]'. On the right, it shows 'Last saved: 1/29/2014 12:23:34 PM' and 'Last reviewed: 4/1/2014 11:02:58 AM'.

The SEER-SEM Browser Edition Interface

Users may create new SEER-SEM projects, open existing projects including those created in the desktop version of SEER-SEM, enter or modify parameters, and display and print reports and charts. The server installation of SEER-SEM serves as the estimating engine while all projects are stored in the SEER Enterprise Database, which is common to both the browser and desktop editions of SEER-SEM. Projects created in either the browser or desktop instances are completely compatible and may be opened and edited again in either.

System Requirements

Network

No specific network requirements, other than the ability to connect to a Windows Server system. The SEER-SEM Browser Edition may be accessed by remote users provided they have access to the SEER-SEM server.

Server

The SEER-SEM Browser Edition requires Windows Server 2008 R2 or higher. For installation and maintenance, a display with 1024 X 768 screen resolution is recommended.

Database

The SEER Enterprise Database can be installed on Microsoft SQL Server 2008 or higher.

Browsers

The SEER-SEM Browser Edition is platform-independent and runs on current versions of the leading Web browsers.

Comparison Chart

Feature	SEER-SEM Browser Edition	SEER-SEM 8.1 Stand-Alone
System		
Operating System	Platform-independent (client)	Windows Vista, Windows 7, 8, or 8.1
	Windows Server 2008 R2 (server)	
System Architecture	Browser-based with network-accessible server	Standalone or executed locally, stored on server
Project Data Storage	Server-based using SEER Enterprise Database	Locally or server-stored files, local or server-based SEER Enterprise Database

General User Interface

Unlike stand-alone SEER-SEM editions, the SEER-SEM Browser Edition has a wizard-style organization, guiding the user through the process in creating an estimate in a step-by-step manner. In this way, the SEM Browser resembles desktop SEER-SEM's Project Assistant. The pages and entries of the SEER-SEM Browser Edition are fully customizable to suit the needs of various types of users.

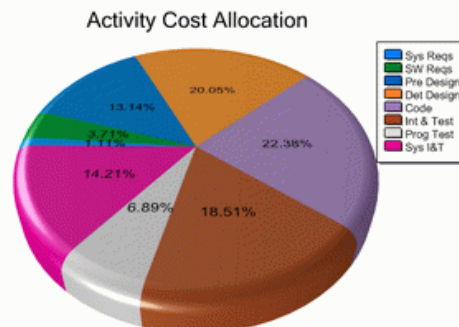
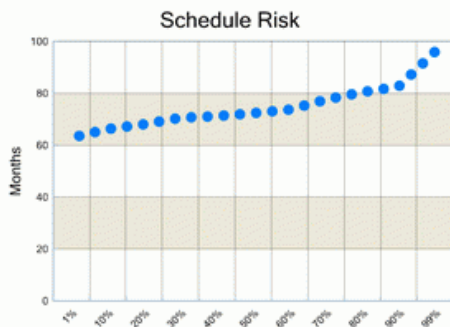
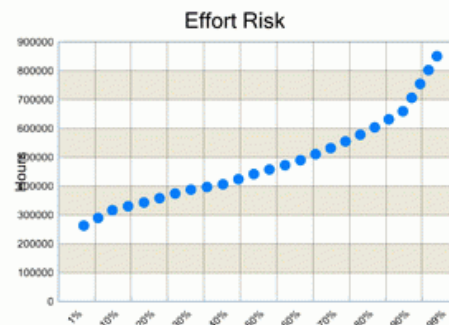
Feature	SEER-SEM Browser Edition	SEER-SEM 8.1 (standalone)
Major Features: Structure		
Project Organized Into WBS	Yes	Yes
Outputs	A subset of reports and charts available in the desktop. More can be provided upon request.	All reports and charts.
External Integration	No external integration.	Full input/output using Server Mode, Flexible Export and custom integrations with SEER and other software.

Step 2 : Estimation Results and Review

Set Reference

View Reports

Format for Printing



369,570 Effort Hours
72.85 Schedule Months

SEER-SEM Browser Edition Outputs

Feature	SEER-SEM Browser Edition	SEER-SEM 8.1 (standalone)
Major Features: Estimating		
Project Monitoring & Control	Yes	Yes
Independent Crosscheck & Verification (effort and schedule estimates based on a project library)	No	Yes
SEER Metrics	Yes	Yes
Customized proxy definitions	Yes	Yes
Project / Rollup risk calculation	Automatic	Yes
Recalculate / Auto-recalculate	Automatic	Yes
Set references	Yes	Yes
Load individual knowledge bases	Yes	Yes
Adjust risk and confidence	Yes	Yes
Change parameters in multiple WBS elements	No	Yes
Clear knowledge bases to 'No Knowledge'	No	Yes
Analogy Based Sizing	Yes	Yes
Analogy Based Estimating	Yes	Yes
Calibration Mode	No	Yes
Create custom labor category and activity names	No	Yes
Quick Planner staffing and schedule adjustments	No	Yes
Customizable entries	Yes	No
Different views for different users	Yes	No
Custom estimating interfaces	Yes	No
Estimate Central – A centralized portal for viewing all estimates	Yes	No