

SEER-IT Browser Edition

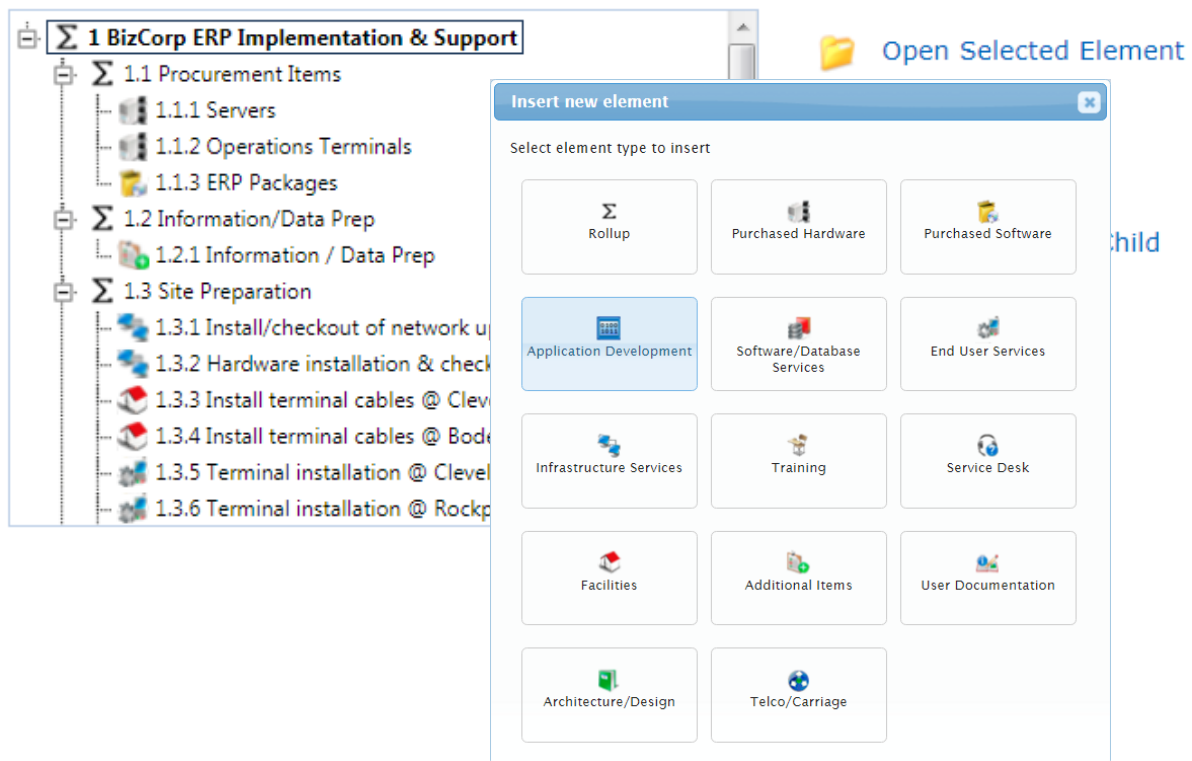
Purpose

The Browser Edition of SEER-IT is a streamlined, highly customizable version of SEER for IT.

Estimate WBS Logout

Select WBS Element

Single click an element to highlight, double click to open.



SEER-IT Browser Edition

The Browser Edition brings SEER-IT's parametric cost-estimation capabilities to a broad range of users via internet or intranet. Its advantages include:

- Zero footprint – no desktop installation is required
- Platform independence – users may access SEER-IT from non-Windows environments, including Linux, the Macintosh OS and from tablets

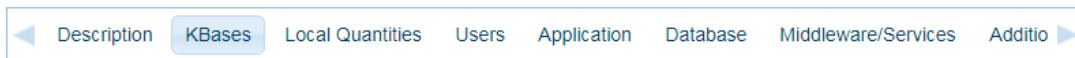
- Centralized, secure data storage – controlled access to estimate data, synchronized updates, centralized maintenance and backup of data
- Extended access to estimating projects – supports role-driven (Read/Write or Read-Only) permissions and views of project information
- Your server or in the cloud – easier collaboration with geographically dispersed teams
- Highly customizable interface – enables wider deployment to a variety of users, for example, full time estimators, line managers, and executive reviewers

Architecture

The SEER-IT Browser Edition consists of the following components:

- A single installation of SEER-IT on the server
- An installation of the SEER Enterprise Database (SEER-DB) on a server that is accessible by the SEER-IT installation
- The SEER-IT Browser Edition server component, installed on the server

Users connect to the SEER- IT Browser Edition via the browser, logging in with a user name and password. A streamlined version of the SEER- IT interface is displayed in the browser window.



Step 2 : Knowledge bases

Task Type: ⓘ

Category: ⓘ

Scope: ⓘ

Economic Factors: ⓘ

Classification: ⓘ

Other: ⓘ

< Previous

Next >

Estimate: BizCorp ERP Implementation & Support
Element: Warehouse Management
Parent Element: Application Configuration & Testing
Estimate Owner: HQ\lfischman

Last saved: 3/2/2017 6:35:50 AM
Last reviewed: 7/24/2017 1:11:09 PM

The SEER-IT Browser Edition Interface

Users may create new SEER- IT projects, open existing projects including those created in the desktop version of SEER- IT, enter or modify parameters, and display and print reports and charts. The server installation of SEER- IT serves as the estimating engine while all projects are stored in the SEER

222 N. Sepulveda Blvd., Ste. 1700 El Segundo, CA 90245 o. +1 310.414.3222 f. +1 310.414.3220 www.galorath.com

Suite 10, Basepoint Business Centre Andover, Hampshire SP10 3FG United Kingdom o. +44 (0) 207 788 9042 f +44 (0) 207 138 2642

Enterprise Database, which is common to both the browser and desktop editions of SEER- IT. Projects created in either the browser or desktop instances are completely compatible and may be opened and edited again in either.

System Requirements

Network

No specific network requirements, other than the ability to connect to a Windows Server system. The SEER-IT Browser Edition may be accessed by remote users provided they have access to the SEER-IT server.

Server

The SEER-IT Browser Edition requires Windows Server 2008 R2 or higher. For installation and maintenance, a display with 1024 X 768 screen resolution is recommended.

Database

The SEER Enterprise Database can be installed on Microsoft SQL Server 2008 or higher.

Browsers

The SEER-IT Browser Edition is platform-independent and runs on current versions of the leading Web browsers.

Comparison Chart

Feature	SEER-IT Browser Edition	SEER-IT 8.1 Stand-Alone
System		
Operating System	Platform-independent (client)	Windows Vista, Windows 7, 8, or 8.1
	Windows Server 2008 R2 (server)	
System Architecture	Browser-based with network-accessible server	Standalone or executed locally, stored on server
Project Data Storage	Server-based using SEER Enterprise Database	Locally or server-stored files, local or server-based SEER Enterprise Database

General User Interface


Unlike stand-alone SEER-IT editions, the SEER-IT Browser Edition has a wizard-style organization, guiding the user through the process in creating an estimate in a step-by-step manner. The pages and entries of the SEER-IT Browser Edition are fully customizable to suit the needs of various types of users.

Feature	SEER-IT Browser Edition	SEER-IT 2.3 (standalone)
Major Features: Structure		
Project Organized Into WBS	Yes	Yes
Outputs	A subset of reports and charts available in the desktop. More can be provided upon request.	All reports and charts.
External Integration	No external integration.	Full input/output using Server Mode, Flexible Export and custom integrations with SEER and other software.

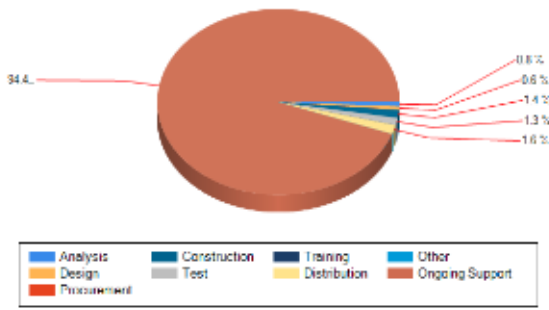
Step 13 : Review Page

 [Set Reference](#)

 [View Reports](#)

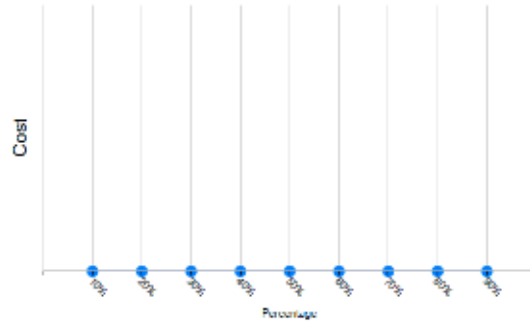
 [Format for Printing](#)

Activity Cost Allocation



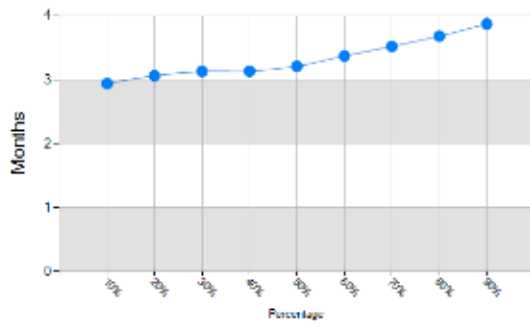
[View Hours](#)

Project Labor Cost Risk

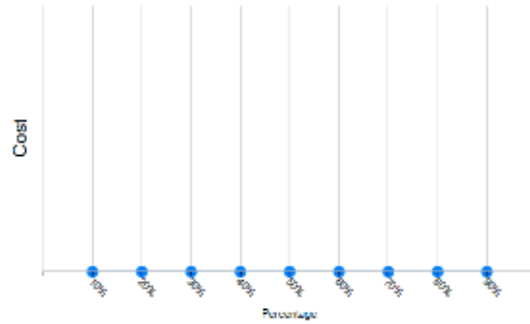


[View Hours](#)

Project Schedule Risk

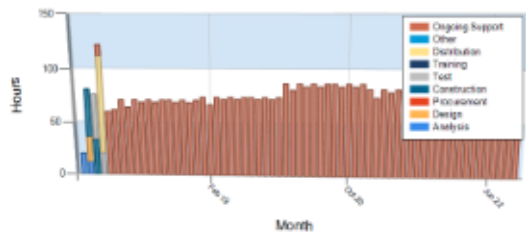


Ongoing Support Labor Cost Risk

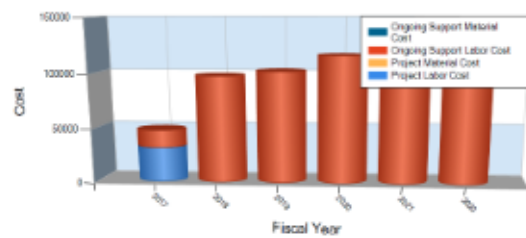


[View Hours](#)

Activity Staff by Month



Cost breakout by Fiscal Year



 [Notify](#)

[View Reports >](#)

[Export Estimates](#) 

SEER-IT Browser Edition Outputs

Feature	SEER-IT Browser Edition	SEER-IT 8.1 (standalone)
Major Features: Estimating		
Project / Rollup risk calculation	Automatic	Yes
Recalculate / Auto-recalculate	Automatic	Yes
Set references	Yes	Yes
Load individual knowledge bases	Yes	Yes
Adjust risk and confidence	Yes	Yes
Change parameters in multiple WBS elements	No	Yes
Clear knowledge bases to 'No Knowledge'	No	Yes
Calibration Mode	No	Yes
Customizable entries	Yes	No
Different views for different users	Yes	No
Custom estimating interfaces	Yes	No
Estimate Central – A centralized portal for viewing all estimates	Yes	No